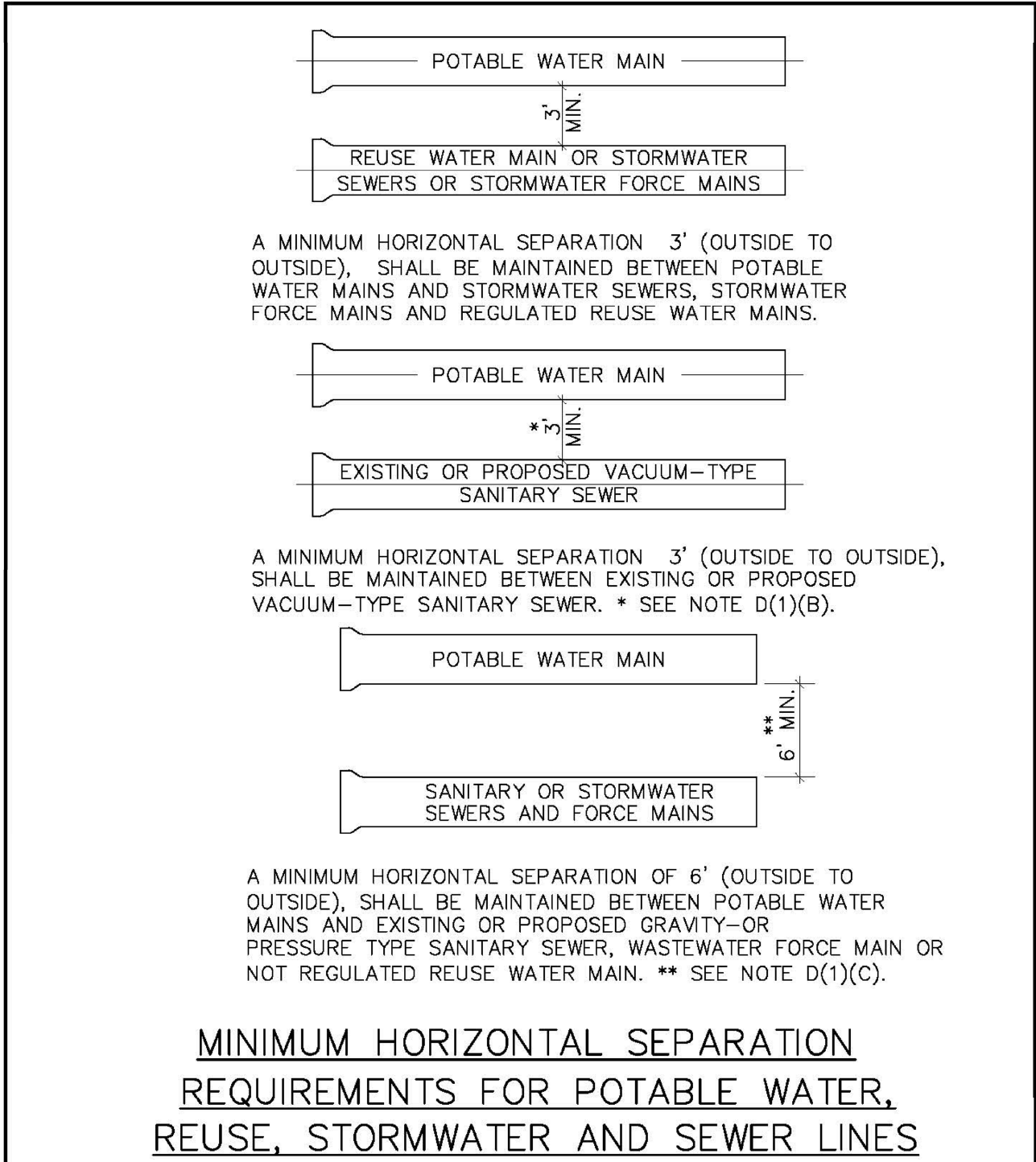
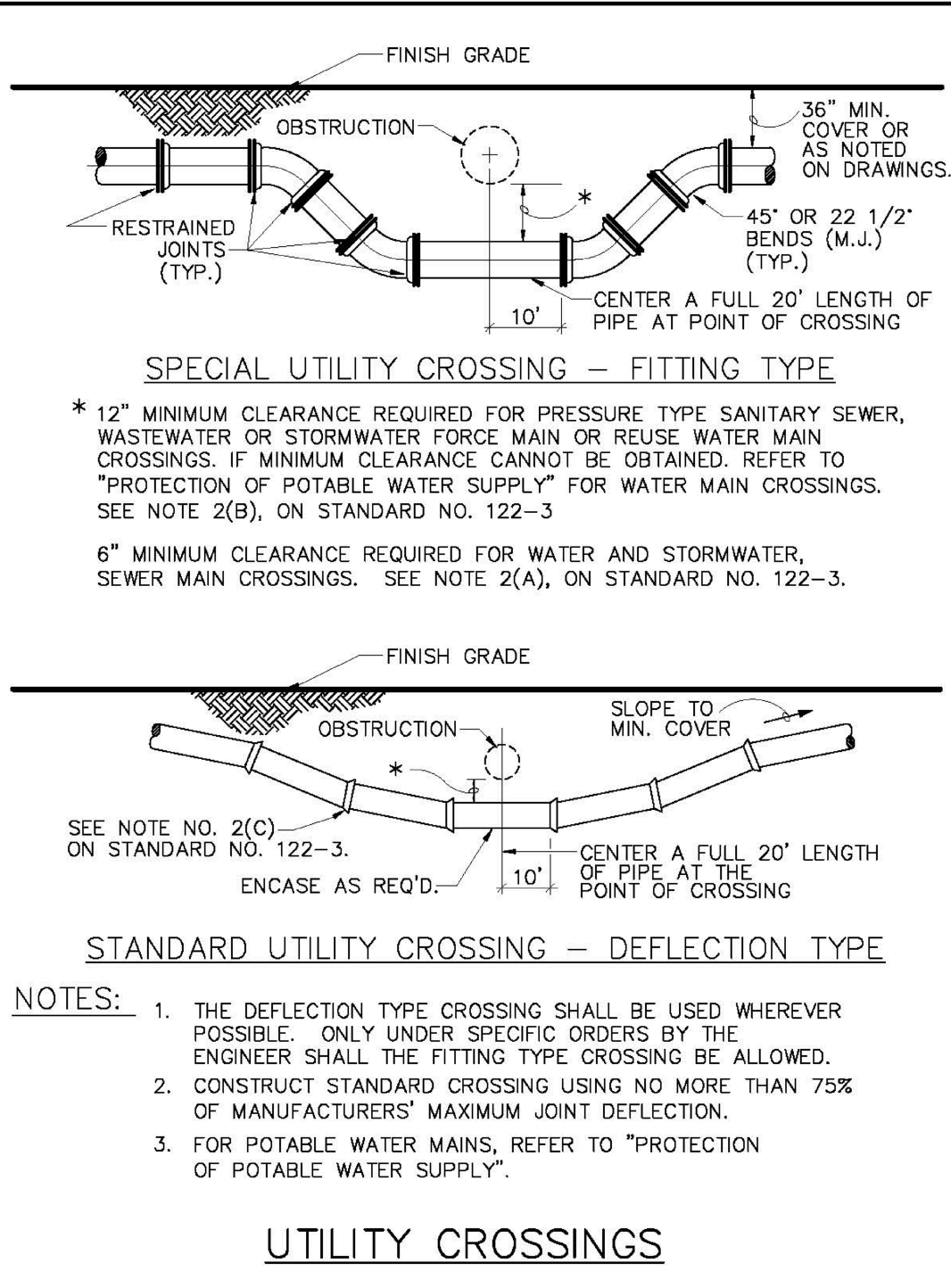


J:\City STANDARDS\2019 Standards Details\Water\1-4.dwg, 11/2/2018 2:54:48 PM



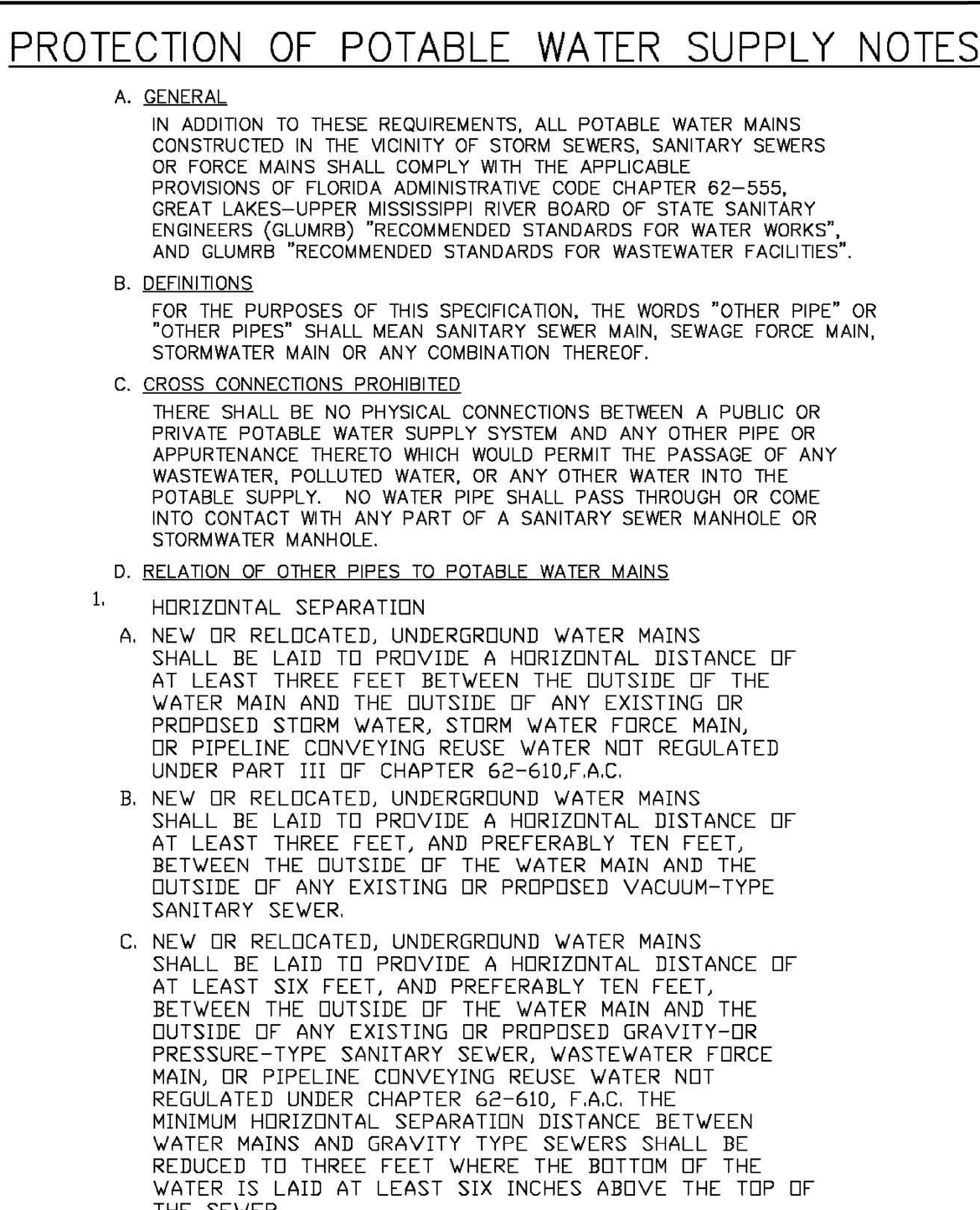
ENGINEERING STANDARDS 2019				
REVISIONS		ENGINEERING DIVISION CITY OF POMPAÑO BEACH	MIN. HORIZONTAL SEPARATION FOR POTABLE WATER	DATE: JAN. 2012 DWG. NO. 121-1
BY	DATE			
S.S.	01/12			
		SCALE: N.T.S.		

J:\City STANDARDS\2019 Standards Details\Water\1-4.dwg, 11/2/2018 2:55:13 PM



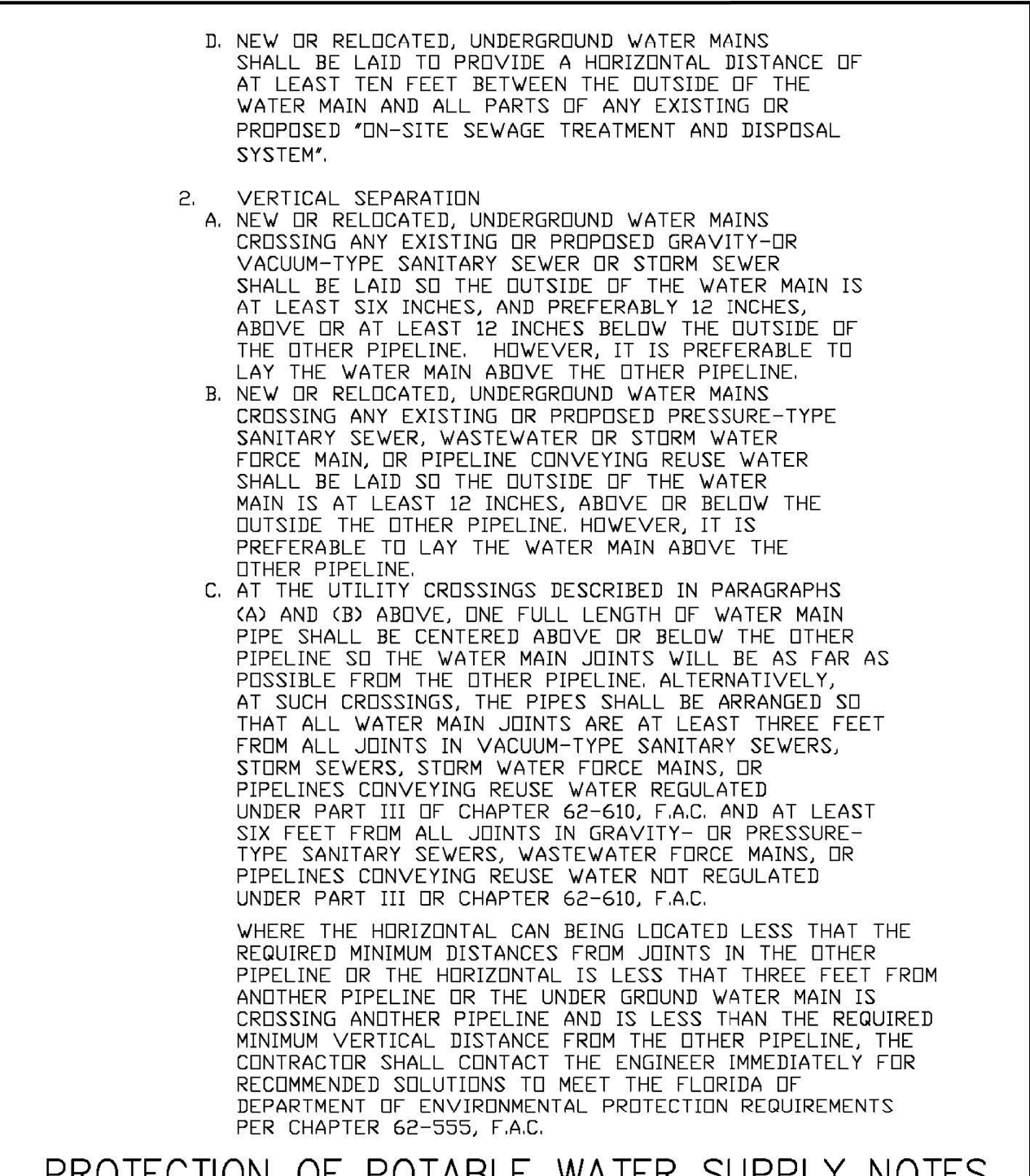
ENGINEERING STANDARDS 2019				
REVISIONS		ENGINEERING DIVISION CITY OF POMPAÑO BEACH	UTILITY CROSSINGS	DATE: JAN. 2012 DWG. NO. 122-1
BY	DATE			
S.S.	01/12			
		SCALE: N.T.S.		

J:\City STANDARDS\2019 Standards Details\Water\1-4.dwg, 11/2/2018 2:55:57 PM



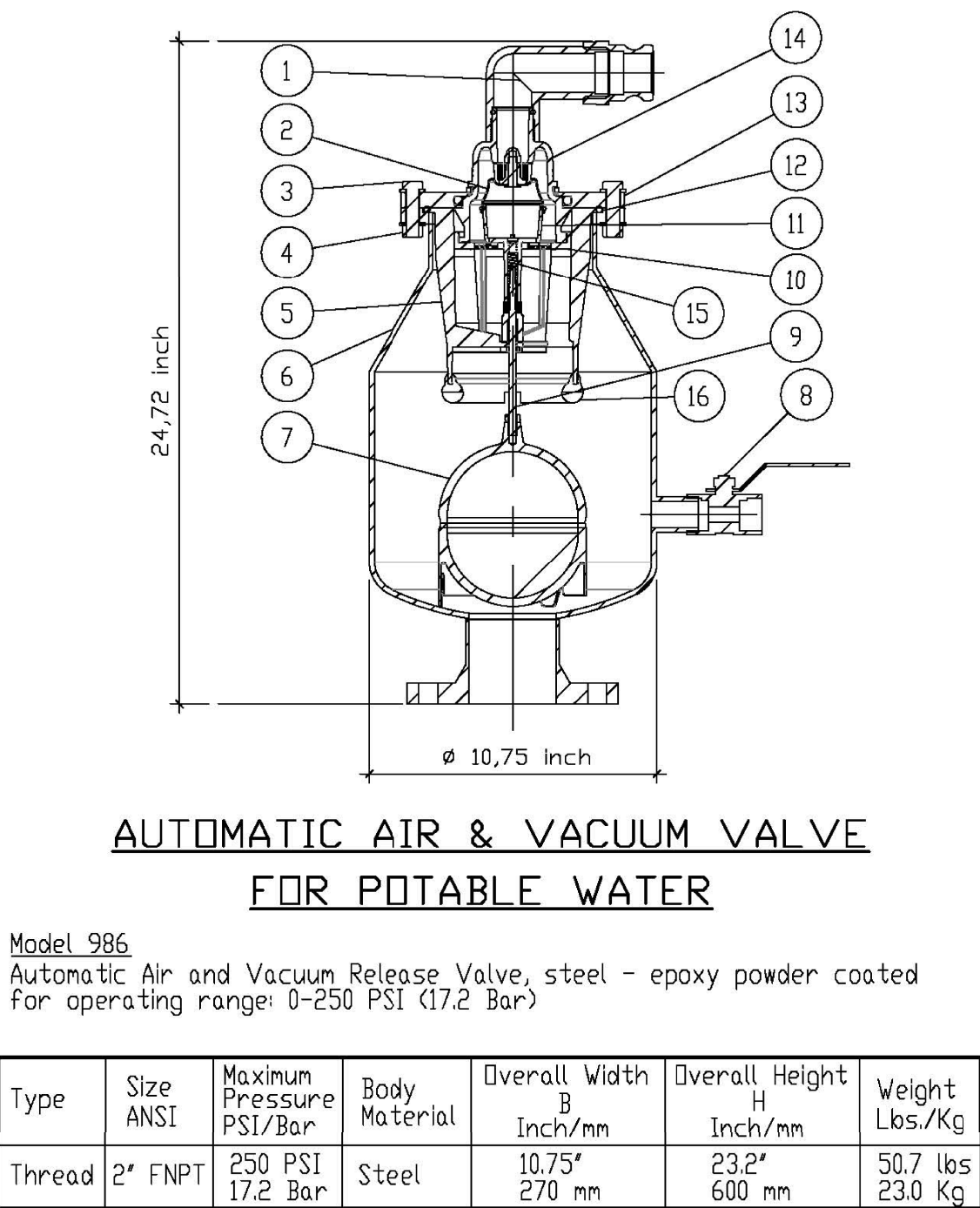
ENGINEERING STANDARDS 2019				
REVISIONS		ENGINEERING DIVISION CITY OF POMPAÑO BEACH	POTABLE WATER SUPPLY NOTES	DATE: JAN. 2012 DWG. NO. 122-2
BY	DATE			
S.S.	01/12			
		SCALE: N.T.S.		

J:\City STANDARDS\2019 Standards Details\Water\1-4.dwg, 11/2/2018 2:56:25 PM



ENGINEERING STANDARDS 2019				
REVISIONS		ENGINEERING DIVISION CITY OF POMPAÑO BEACH	POTABLE WATER SUPPLY NOTES	DATE: JAN. 2012 DWG. NO. 122-3
BY	DATE			
S.S.	01/12			
		SCALE: N.T.S.		

J:\City STANDARDS\2019 Standards Details\Water\1-4.dwg, 11/2/2018 2:57:19 PM



ENGINEERING STANDARDS 2019				
REVISIONS		ENGINEERING DIVISION CITY OF POMPAÑO BEACH	H-TEC AIR AND VACUUM VALVE	DATE: MAY 2014 DWG. NO. 123-1
BY	DATE			
		SCALE: N.T.S.		

J:\City STANDARDS\2019 Standards Details\Water\1-4.dwg, 11/2/2018 2:57:42 PM

No.	Component	Series - Epoxy-coated steel
1	Outlet elbow w. screen/canlock 1.5"	Polyethylene (PE)
2	Diaphragm	Buna HNBR
3	Hex Head Bolt	Stainless Steel
4	Hexagon nut	Stainless Steel
5	Debris shield	Polyethylene (PE)
6	Body	Steel - epoxy powder coated
7	Float	Delrin®(PDM)
8	Ball valve, 1"	Stainless Steel
9	Float spindle	Stainless Steel 316TI
10	Debris screen	Delrin®(PDM)
11	Diaphragm holder	Delrin®(PDM)
12	O-Ring 157 x 6 mm	Buna NBR
13	Clamping flange	Steel - epoxy powder coated
14	Upper air valve part	Delrin®(PDM)
15	Valve spring	Stainless Steel
16	Damper ring	Buna NBR

Automatic Air and Vacuum Release Valve, steel - epoxy powder coated (Model # 986).

Automatic Air and Vacuum Valves shall be infinitely variable automatic air and vacuum valves designed to allow escape of air for a operating range starting from pressure range: 0.0 through 250 psi (0 - 17.2 bar). Allow air to enter in the event of a vacuum, and soft working behavior as water hammer inhibition realized by roll-on diaphragm and spring mechanism. A debris shield made of PE allows no contact between fluid and sealing area. A secondary debris screen provides an additional protection for the diaphragm. The float shall be Delrin (Polyoximethylene, PDM); the valve seat and all working parts shall be of corrosion-resistant materials.

Air and vacuum valves shall be, from H-TEC, Inc. (Hawle company)

PAINT BODY OF THE VALVE BLUE USING AN EPOXY PAINT.

ENGINEERING STANDARDS 2019				
REVISIONS		ENGINEERING DIVISION CITY OF POMPAÑO BEACH	H-TEC AIR AND VACUUM VALVE MATERIALS OF CONSTRUCTION	DATE: MAY 2014 DWG. NO. 123-2
BY	DATE			
		SCALE: N.T.S.		

DESIGNED: WFI DATE: 01/2023
DRAWN: WFI DATE: 01/2023
CHECKED: DATE:
PUBLISHED: 8/21/2023, 8:32:29 PM

WINNINGHAM & FRADLEY, INC.
ENGINEERS • PLANNERS • SURVEYORS
111 N.E. 44th STREET, OAKLAND PARK, FL 33334 954-771-7480 FAX: 954-771-0288 www.winfradley.com

PALM AIRE TENNIS CENTER
RWB / LINARES ARCHITECTURE

CITY OF POMPAÑO BEACH
STANDARD WATER DETAILS

PROJ: EB-0002995
SHEET: 22 OF 26
DATE: 10/04/2023

PZ23-12000009
10/04/2023